



Lowood Court, SE19 | £1,850 Per Calendar Month

020 8702 9333

crystalpalace@pedderproperty.com

pedder
We live local



In General

- Two double bedrooms
- Separate kitchen
- 5th floor with lift
- Dulwich Estate development
- Offered unfurnished
- Available immediately
- Close to transport & amenities
- Fully redecorated throughout

In Detail

A bright and generously proportioned fifth floor apartment set within the prestigious Dulwich Estate development and offering elevated views of the immediate area and beyond.

This light and bright accommodation boasts teak flooring, two double bedrooms with ample fitted storage, as well as a lift, modern kitchen with dishwasher and bathroom with shower above bath.

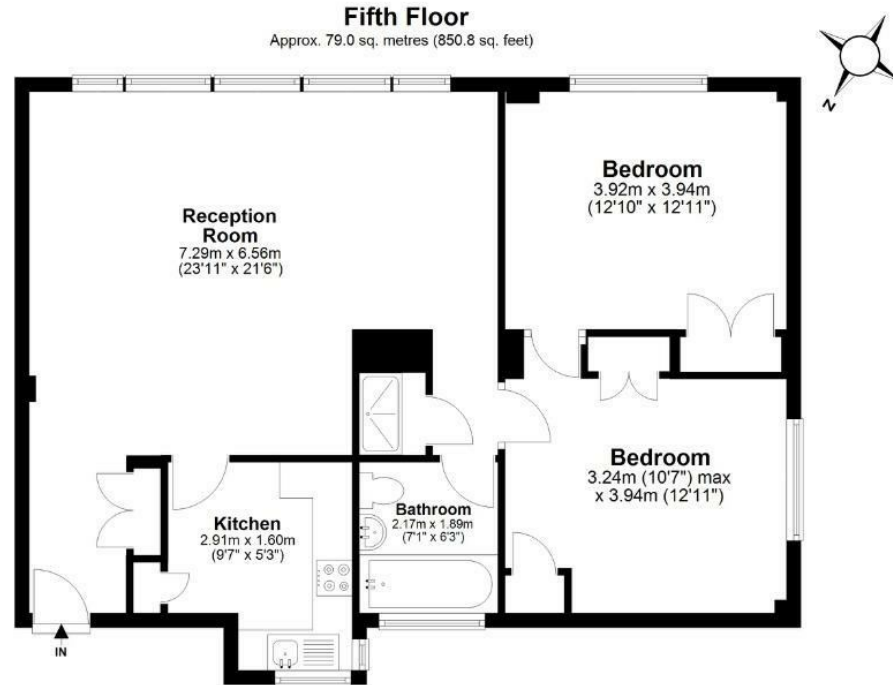
Farquhar Road, SE19 is ideal for ease of access to both Gipsy Hill, Sydenham Hill and Crystal Palace train stations, whilst the shopping and leisure facilities of central Crystal Palace, Gipsy Parade and West Dulwich are close by.

A great long-term rental which should be seen to be appreciated.

EPC: C | Council Tax Band: Southwark, C | HD: £426.92 | SD: £2,134.61 | Available immediately | Offered unfurnished



Floorplan



Total area: approx. 79.0 sq. metres (850.8 sq. feet)

Copyright www.pedderproperty.com 2024. These plans are for representation purposes only as Defined by RICS - Code of Measuring Practice. Not drawn to scale. windows and door measurements are approximate. please check dimensions, shapes and compass bearings before making any decisions reliant upon them.

Plan produced using PlanUp.

Energy Efficiency Rating		Current	Potential
Very energy efficient - lower running costs			
102 plus) A			
81-101) B			
69-80) C			
55-68) D		69	80
39-54) E			
21-38) F			
1-20) G			
Not energy efficient - higher running costs			
England & Wales		EU Directive 2002/91/EC	

Pedder Property Ltd trading as Pedder for themselves and for the vendor/landlord of this property whose agents they are, give notice that (1) these particulars do not constitute any part of an offer or contract, (2) all statements contained within these particulars are made without responsibility on the part of Pedder or the vendor/landlord, (3) whilst made in good faith, none of the statements contained within these particulars are to be relied upon as a statement of representation or fact, (4) any intending purchaser/tenant must satisfy him/herself by inspection or otherwise as to the correctness of each of the statements contained within these particulars, (5) the vendor/landlord does not make or give either Pedder or any person in their employment any authority to make or give representation or warranty whatsoever in relation to this property.